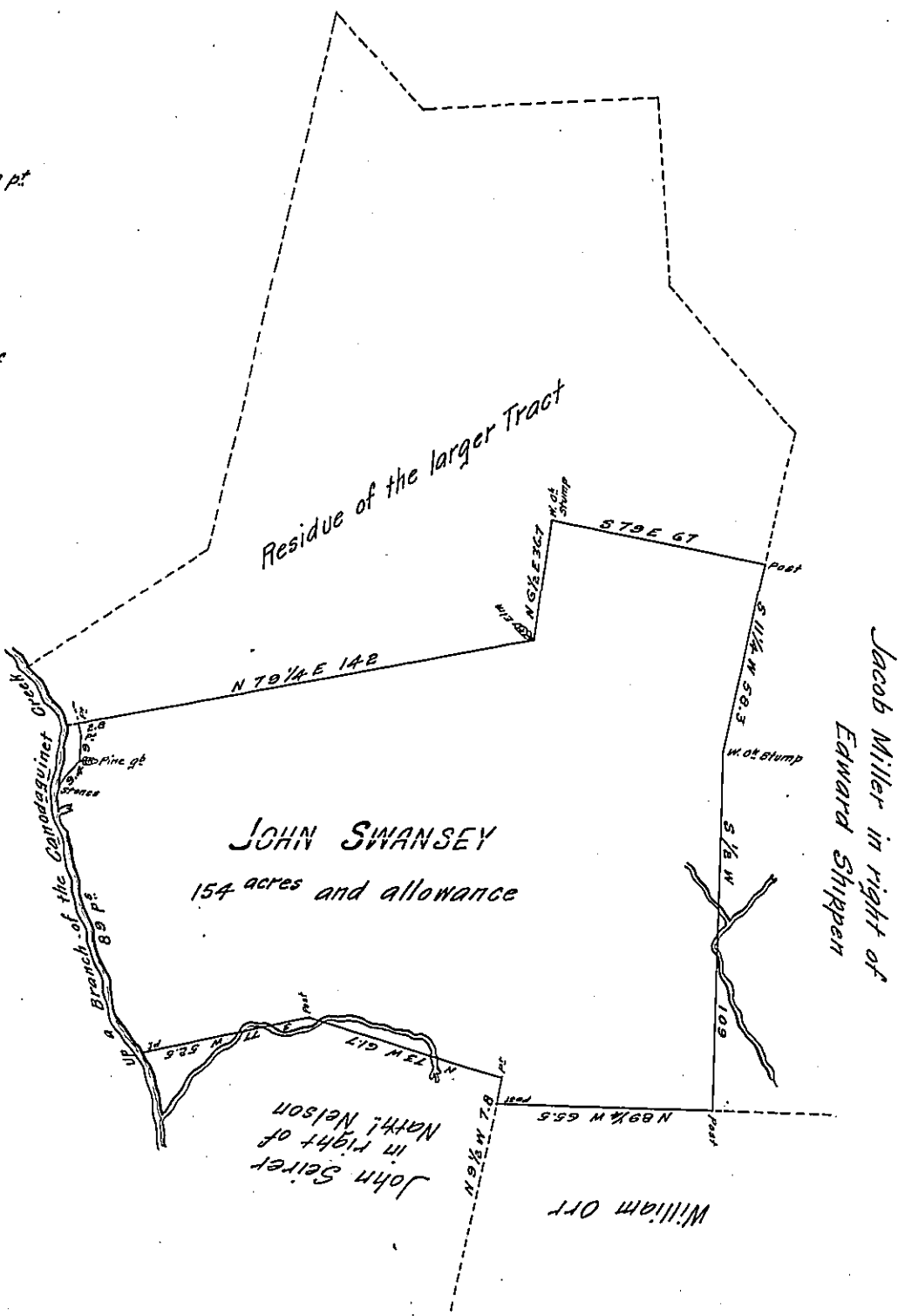


Courses & distance up the middle of a Branch of the Canodagwinet Creek - as follows, Viz; Beginn<sup>d</sup> at a p<sup>t</sup>

- N 44 W 16
- N 21 W 7
- N 12 1/4 W 19
- N 20 1/2 W 22
- N 3 W 18
- N 9 E 7

89 p<sup>t</sup> to stones on the side of s<sup>d</sup> Branch thence along a part of the larger Tract, where the dam of Rapps, Plaster & Saw Mill is on,

- N 36 1/4 E 9.4 pine grub
- N 2 1/2 E 9 post
- N 21 W 2.8 post, thence by residue of larger Tract.



A draught of a Tract of Land, situated in Eastpennsbro' Township Cumberland County, containing one hundred and fifty four acres - ~~and~~ and allowance of six p<sup>t</sup> C<sup>t</sup> for Roads &c being part of 293<sup>ac</sup> 26<sup>p</sup> originally Surveyed on a Warrant to John Swansey, dated the 6<sup>th</sup> day of June A.D. 1744, This part Resurveyed & divided off the 1<sup>st</sup> day of August A.D. 1828 - all which is certified

*Jr.* Jn<sup>o</sup> Harper, D. S. C. County

Gabriel Hiester Esq<sup>t</sup>  
 Surveyor Gen<sup>l</sup>  
 Penn<sup>a</sup>

IN TESTIMONY that the above is a copy of the original remaining on file in the Department of Internal Affairs of Pennsylvania, made conformably to an Act of Assembly approved the 16th day of February, 1833, I have hereunto set my Hand and caused the Seal of said Department to be affixed at Harrisburg, this twenty-second day of August 1907.

*Henry Houck*  
 Secretary of Internal Affairs.